

# Environmental Impact Assessment Report

Beinneun 2 Wind Farm

Volume 3

Technical Appendix A12.1: Watercourse Crossing Inventory

Document prepared by Raincloud Ltd for Beinneun 2 Ltd

July 2025





RAINCLOUD

# BEINNEUN II WIND FARM

EIA REPORT  
TECHNICAL APPENDIX A12.1:  
WATERCOURSE CROSSINGS  
INVENTORY

JULY 2025

# CONTROL SHEET

This report has been prepared by Raincloud Consulting Ltd for the sole use of the client only. Raincloud offer no warranty or liability for the information contained within the report to any other party.

Site ID	Prepared by	Reviewed by	Date	Version	Comment
080	EL	LN	11/07/2025	1-0	First Draft
			24/07/2025	2-0	Issued



## 1 INTRODUCTION

Raincloud Consulting Ltd ('Raincloud') has been commissioned by Beinneun 2 Ltd (the 'Client') to undertake the watercourse crossing investigation work as part of the development of Beinneun 2 Wind Farm (the Development').

Raincloud carried out a survey of 23 new watercourse crossing locations. The access track will be entirely new, therefore there are no existing watercourse crossings. 23 crossings will be constructed as part of the construction works for the Development.

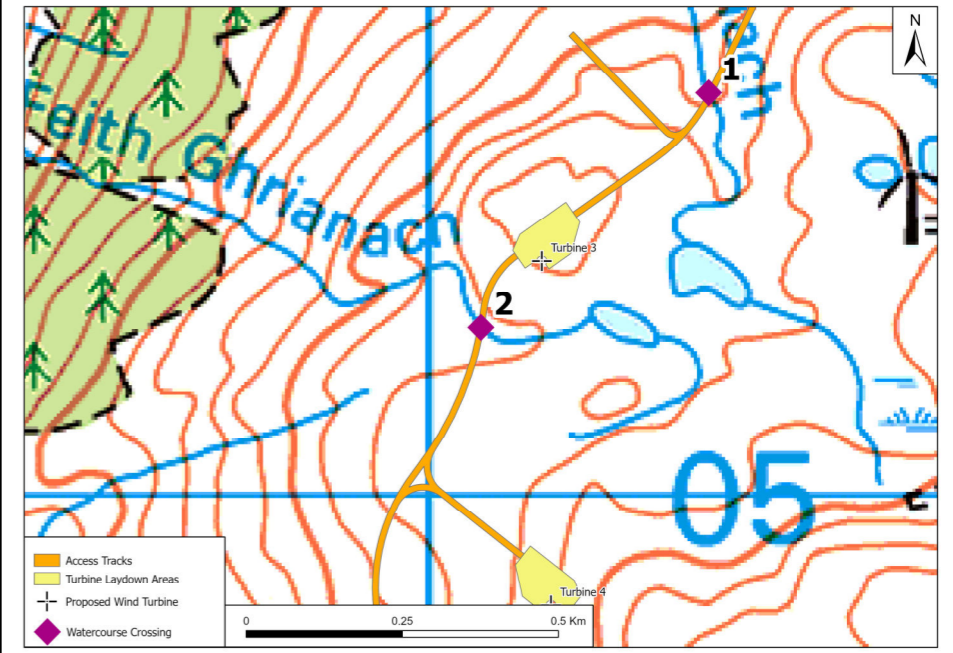
Relevant information regarding each proposed watercourse crossing is provided in Table A12.1.1, together with a note of the proposed crossing type to be constructed, an Ordnance Survey 1:50,000 scale map extract, showing the crossing location and photographs of the watercourse. Grid coordinates for each crossing and their approximate location to proposed turbines are also provided.

The detailed design of all crossings would be undertaken in consultation with SEPA and the Highland Council and would be agreed prior to construction.

**Table A12.1.1: Watercourse Crossing Schedule**

Watercourse Crossing 1		
Existing/New Crossing	New Crossing	
Location Description	Approximately 380 m north of Turbine 3	
Grid-coordinates	220448 E, 805643 N	
Description	Coachan Riabhach flowing south to north to Loch Loyne	
Crossing Type	Piped Culvert	
CAR Requirement	Registration	
Elevation Profile		
Watercourse Crossing Photos		
Upstream	Across	Downstream

Watercourse Crossing 2	
Existing/New Crossing	New Crossing
Location Description	Approximately 145 m south of Turbine 3
Grid-coordinates	220,084 E 805,267 N
Description	Feith Ghrianach flowing east to west to Loch Loyne
Crossing Type	Piped Culvert
CAR Requirement	Registration
Elevation Profile	



Watercourse Crossing Photos



Watercourse Crossing 3	
Existing/New Crossing	New Crossing
Location Description	Approximately 290 m east of Turbine 5
Grid-coordinates	220,909E 804,422N
Description	Tributary of Allt a' Bhiora flowing north to south to Loch Garry.
Crossing Type	Piped Culvert
CAR Requirement	Registration
Elevation Profile	 

Watercourse Crossing Photos

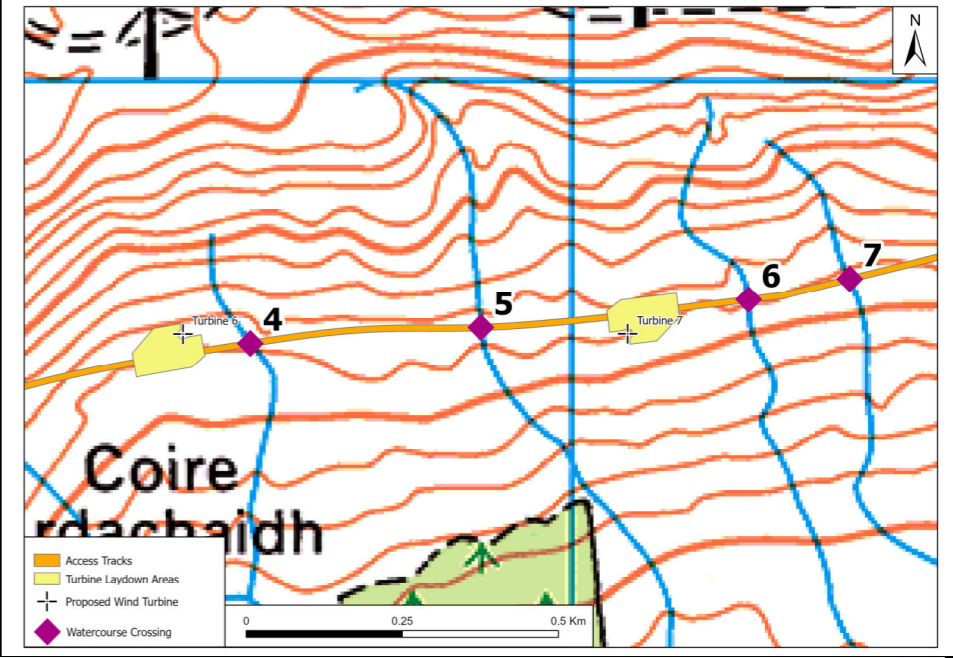


Watercourse Crossing 4		
Existing/New Crossing	New Crossing	
Location Description	Approximately 108 m east of Turbine 6	
Grid-coordinates	221,485E 804,579N	
Description	Tributary of Allt a' Bhiora flowing north to south to Loch Garry.	
Crossing Type	Arched Culvert	
CAR Requirement	Registration	
Elevation Profile	<p>Elevation Profile Elevation (m) 414 412 410 408 5 10 15 20 25 30 35 40 45 50 55 60 65 Distance (69.84 m) Elevation: Min: 408.45 m Avg: 410.87 m Max: 413.87 m Gain: 5.42 m Loss: -0.58 m Slope: Max: 19.32% -6.43% Avg: 10.71% -3.02%</p>	

Watercourse Crossing Photos

Upstream	Across	Downstream

Watercourse Crossing 5	
Existing/New Crossing	New Crossing
Location Description	Approximately 235 m west of Turbine 7
Grid-coordinates	221,854E 804,604N
Description	Tributary of Allt a' Bhiora flowing north to south to Loch Garry.
Crossing Type	Piped culvert
CAR Requirement	Registration
Elevation Profile	<p>Elevation Profile Elevation (m) 412.2 412.1 412.0 411.9 411.8 411.7 Distance (34.68 m) Elevation: Min-411.73 m Avg-411.87 m Max-412.14 m Gain-0.31 m Loss-0.45 m Slope: Max-4.78% -3.91% Avg-1.70% -1.61%</p>



Watercourse Crossing Photos

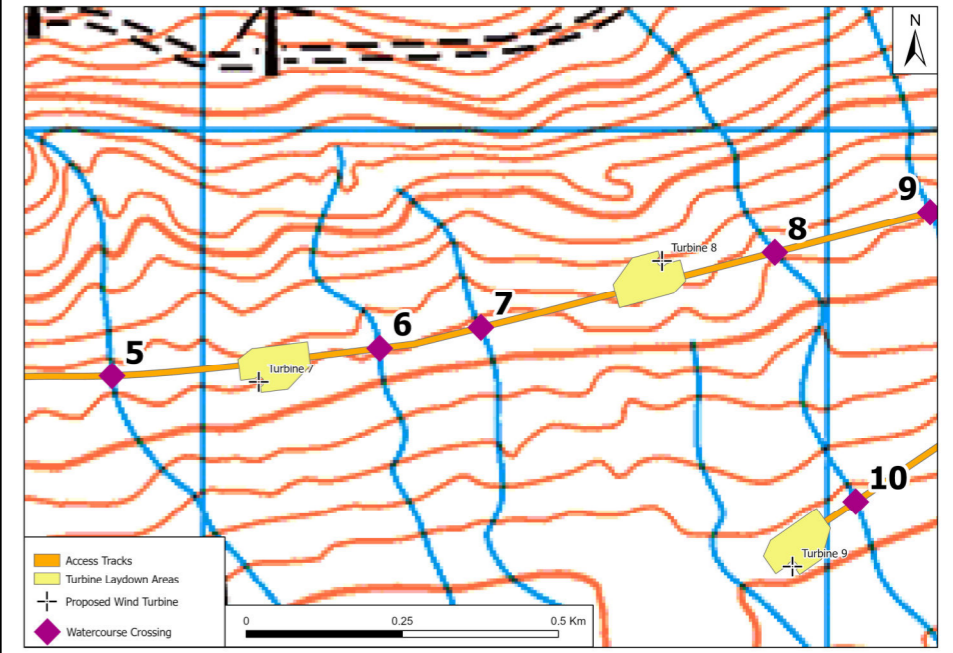


Watercourse Crossing 6		
Existing/New Crossing	New Crossing	
Location Description	Approximately 200 m east of Turbine 7	
Grid-coordinates	222,283E 804,649N	
Description	Tributary of Allt a' Bhiora flowing north to south to Loch Garry.	
Crossing Type	Piped Culvert	
CAR Requirement	Registration	
Elevation Profile	<p>Elevation Profile</p> <p>Elevation (m): 410.7, 410.5, 410.3, 410.1, 409.9, 409.7</p> <p>Distance (71.86 m): 5, 10, 15, 20, 25, 30, 35, 40, 45, 50, 55, 60, 65, 70</p> <p>Elevation: Min: 409.70 m, Avg: 410.25 m, Max: 410.84 m, Gain: 0.32 m, Loss: -1.31 m</p> <p>Slope: Max: -4.78%, Avg: 1.43%, Min: -0.62%</p>	

Watercourse Crossing Photos

Upstream	Across	Downstream

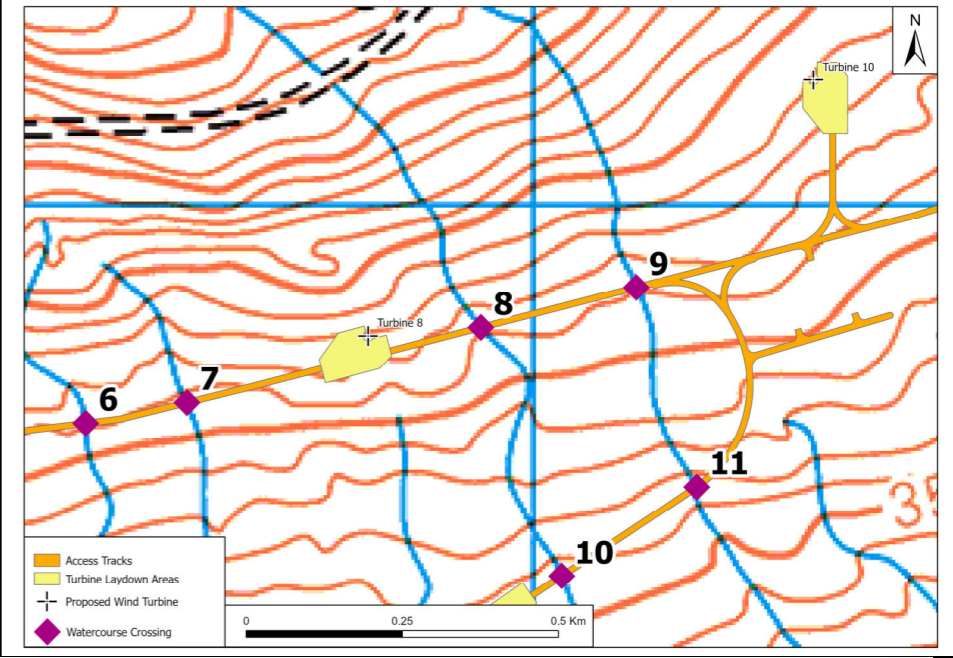
Watercourse Crossing 7	
Existing/New Crossing	New Crossing
Location Description	Approximately 307 m west of Turbine 8
Grid-coordinates	222,445E 804,682N
Description	Tributary of Allt a' Bhiora flowing north to south to Loch Garry.
Crossing Type	Arched Culvert
CAR Requirement	Registration
Elevation Profile	<p>Elevation Profile Elevation (m): 405.6, 405.4, 405.2, 405.0, 404.8, 404.6, 404.4, 404.2, 404.0 Distance (0.30 m): 3, 6, 9, 12, 15, 18, 21, 24, 27, 30, 33, 36, 39 Elevation: Min: 404.03 m, Avg: 404.73 m, Max: 405.80 m, Gain: 1.31 m, Loss: -1.76 m Slope: Max: 10.82%, -11.58%, Avg: 7.25%, -8.32%</p>



Watercourse Crossing Photos

Upstream	Across	Downstream

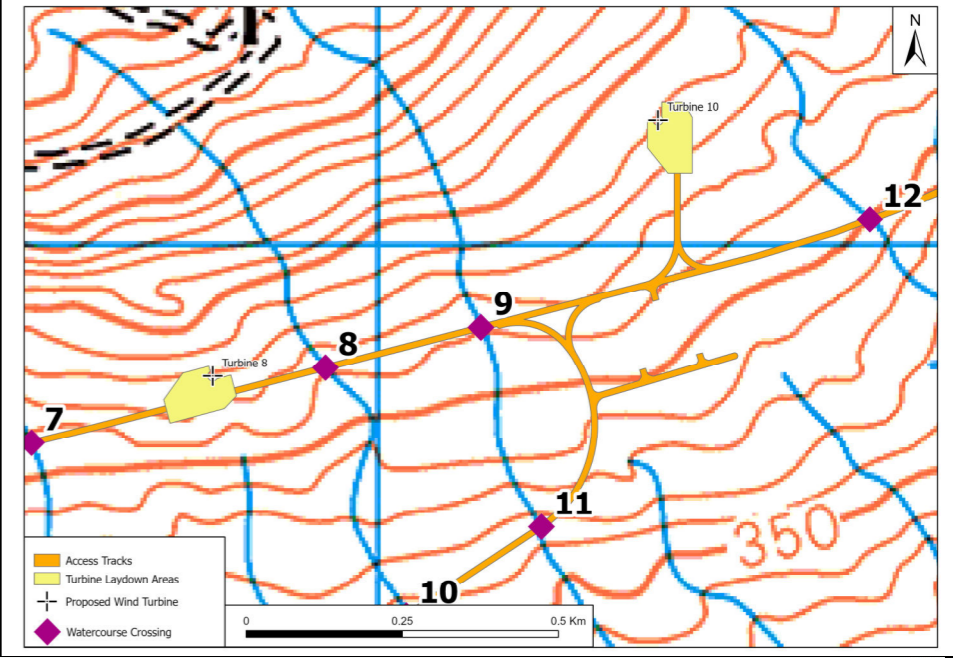
Watercourse Crossing 8	
Existing/New Crossing	New Crossing
Location Description	Approximately 185 m east of Turbine 8
Grid-coordinates	222,916E 804,802N
Description	Tributary of Allt Dubh flowing north to south to Loch Garry
Crossing Type	Piped Culvert
CAR Requirement	Registration
Elevation Profile	<p>Elevation Profile Elevation (m) 415 414 413 412 411 5 10 15 20 25 30 35 40 45 50 55 60 65 Distance (65.11 m) Slope: Max 9.02% -7.15% Avg 7.40% -4.92%</p>



Watercourse Crossing Photos



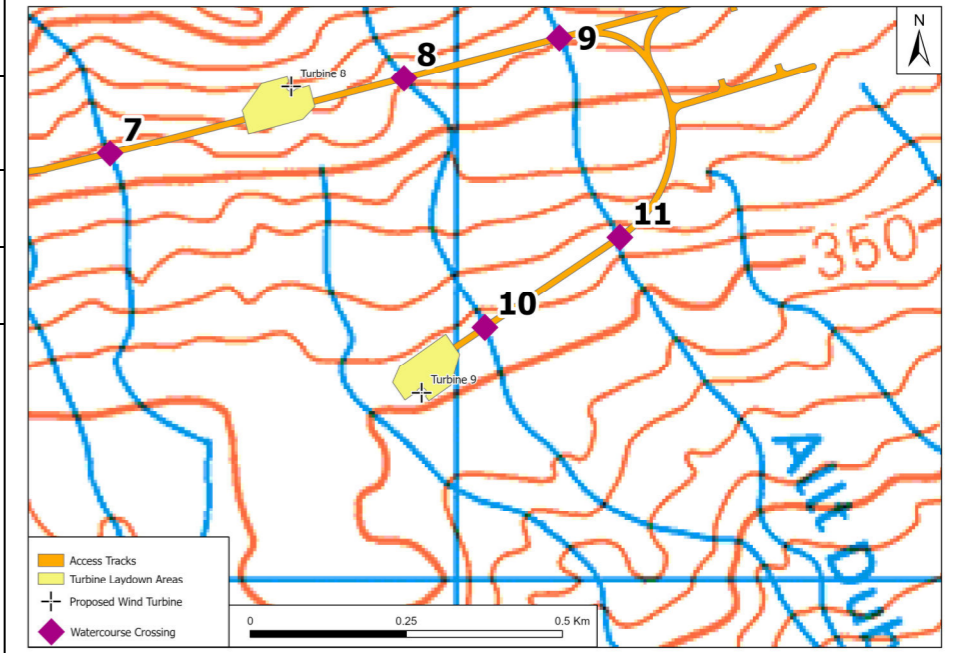
Watercourse Crossing 9	
Existing/New Crossing	New Crossing
Location Description	Approximately 436 m southwest of Turbine 10
Grid-coordinates	223,165E 804,866N
Description	Allt Dubh river flowing north to south to Loch Garry
Crossing Type	Piped Culvert
CAR Requirement	Registration
Elevation Profile	<p>Elevation Profile Elevation (m): 410.0, 410.5, 411.0, 411.5, 412.0, 412.5, 413.0 Distance (70.65 m): 0, 5, 10, 15, 20, 25, 30, 35, 40, 45, 50, 55, 60, 65, 70 Elevation: Min: 410.49 m, Avg: 411.47 m, Max: 412.87 m, Gain: 2.36 m, Loss: -1.46 m Slope: Min: 0.22%, -5.30%, Avg: 5.96%, -4.71%</p>



Watercourse Crossing Photos

Upstream	Across	Downstream

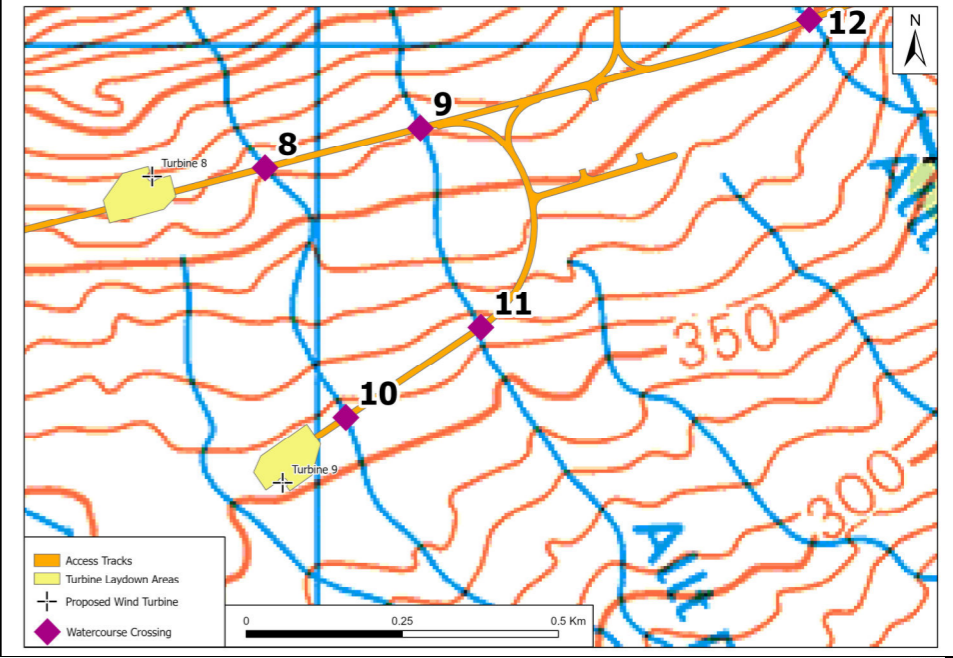
Watercourse Crossing 10	
Existing/New Crossing	New Crossing
Location Description	Approximately 145 m northeast of Turbine 9
Grid-coordinates	223,046E 804,403N
Description	Tributary of Allt Dubh flowing north to south to Loch Garry
Crossing Type	Arched Culvert
CAR Requirement	Registration
Elevation Profile	<p>Elevation Profile Elevation (m) 358 357 356 355 354 1 2 3 4 5 6 7 8 9 10 11 12 13 14 15 16 17 Distance (17.09 m) Elevation: Min 354.88 m Avg 356.23 m Max 357.61 m Gain 2.73 m Loss -0.95 m Slope: Min 38.01% -23.33% Avg 23.75% -20.93%</p>



Watercourse Crossing Photos

Upstream	Across	Downstream

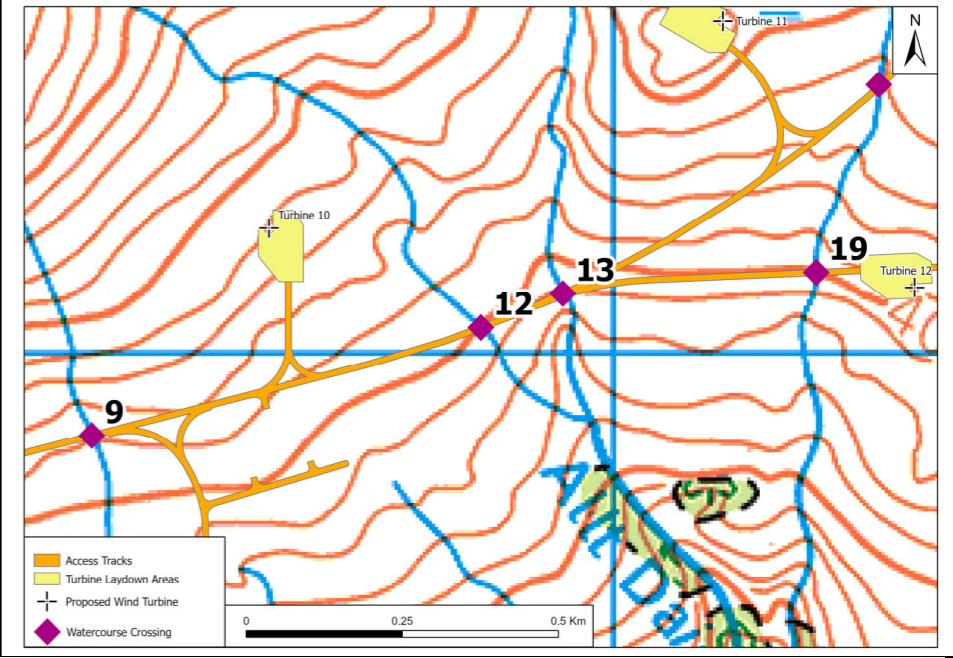
Watercourse Crossing 11	
Existing/New Crossing	New Crossing
Location Description	Approximately 400 m northeast of Turbine 9
Grid-coordinates	223,262E 804,547N
Description	Allt Dubh river flowing north to south to Loch Garry
Crossing Type	Piped Culvert
CAR Requirement	Registration
Elevation Profile	



Watercourse Crossing Photos

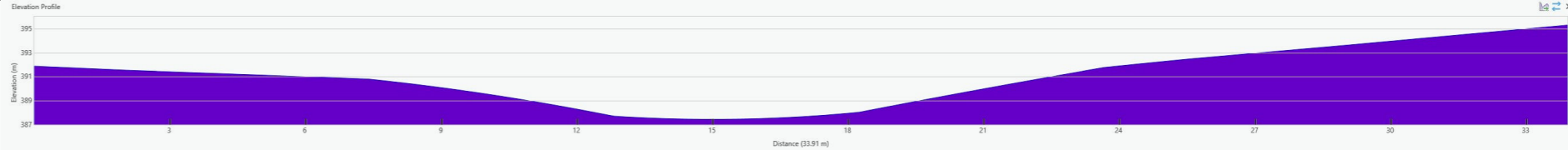
Upstream	Across	Downstream

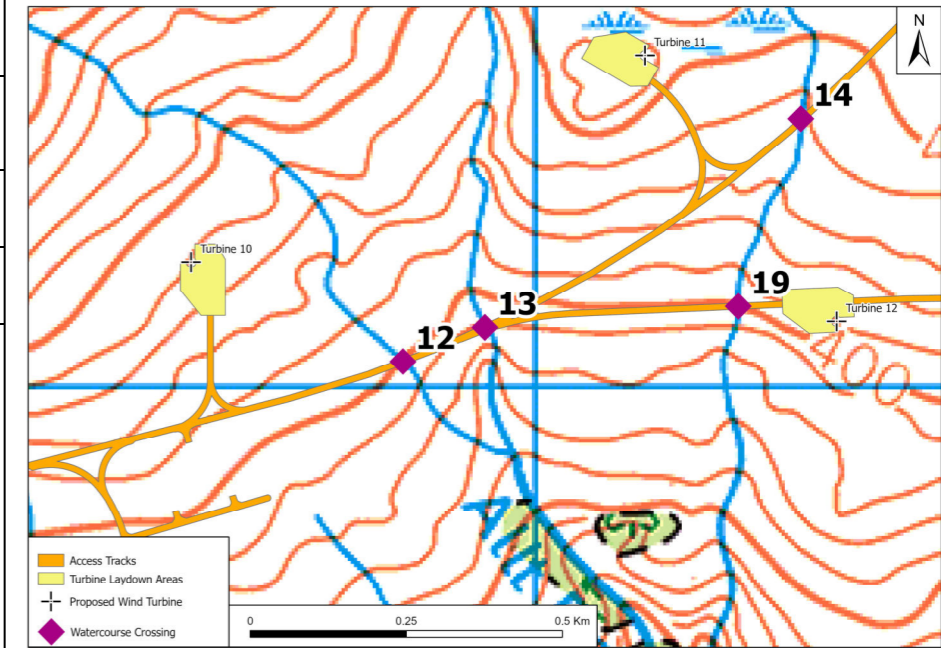
Watercourse Crossing 12	
Existing/New Crossing	New Crossing
Location Description	Approximately 375 m southeast of Turbine 10
Grid-coordinates	223,788E 805,039N
Description	Tributary of Allt Daingean flows north to south to join Loch Garry
Crossing Type	Arched Culvert
CAR Requirement	Registration
Elevation Profile	<p>Elevation Profile Elevation (m) 401 400 399 398 397 396 5 10 15 20 25 30 35 40 45 50 55 60 65 70 80 Distance (84.15 m) Elevation: Min: 396.01 m Avg: 397.80 m Max: 400.61 m Gain: 0.50 m Loss: -5.18 m Slope: Max: 7.73% -15.70% Avg: 3.19% -7.65%</p>





Watercourse Crossing Photos

Upstream	Across	Downstream

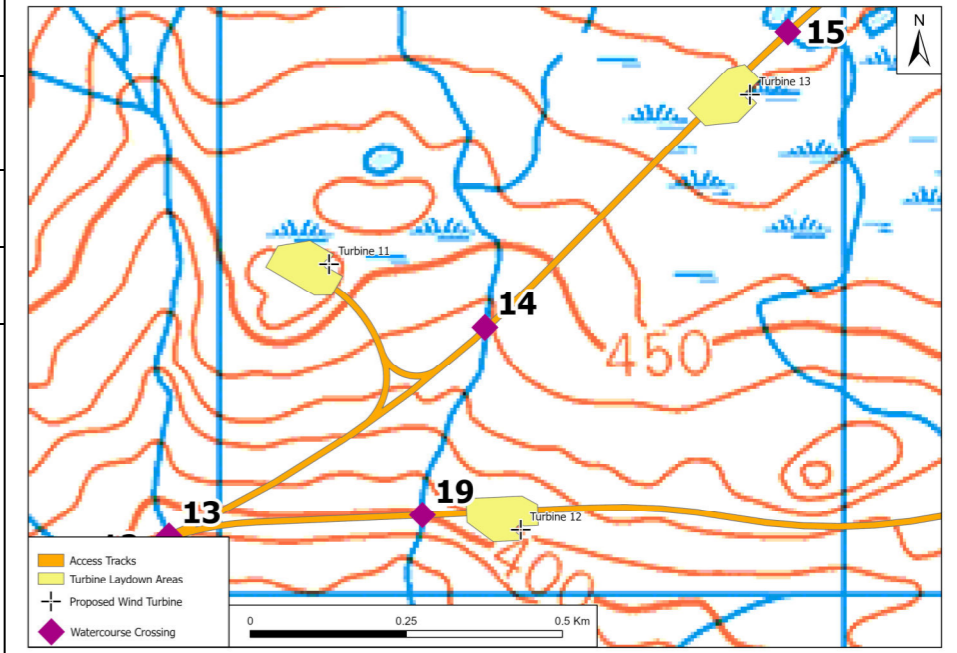
Watercourse Crossing 13	
Existing/New Crossing	New Crossing
Location Description	Approximately 475 m east of Turbine 10
Grid-coordinates	223,919E 805,094N
Description	Allt Daingean river flowing north to south to join Loch Garry
Crossing Type	Wide Arched Culvert
CAR Requirement	Registration expected (Simple Licence may be required depending on detailed final design)
Elevation Profile	 <p>Elevation Profile</p> <p>Distance (33.91 m)</p> <p>Elevation: Min: 387.48 m Avg: 390.91 m Max: 395.32 m Gain: 7.84 m Loss: -4.42 m</p> <p>Slope: Min: 72.98% -73.30% Avg: 41.66% -29.49%</p>



Watercourse Crossing Photos


Upstream	Across	Downstream
		

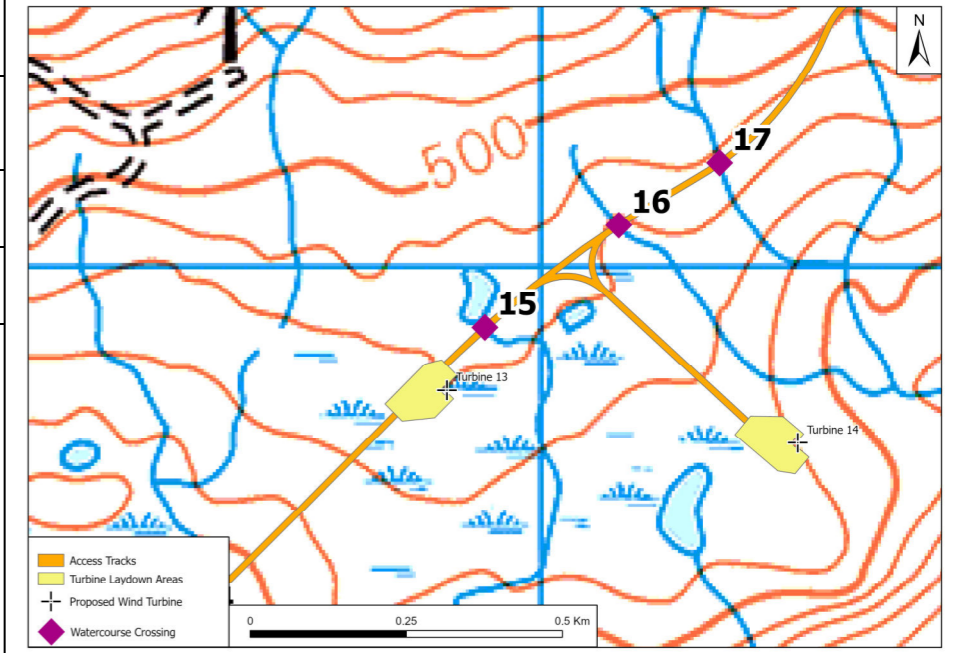
Watercourse Crossing 14	
Existing/New Crossing	New Crossing
Location Description	Approximately 270 m east of Turbine 11
Grid-coordinates	224,425E 805,428N
Description	Unnamed river joining Allt Daingean flowing north to south to Loch Garry
Crossing Type	Wide Arched Culvert
CAR Requirement	Registration expected (Simple Licence may be required depending on detailed final design)
Elevation Profile	



Watercourse Crossing Photos

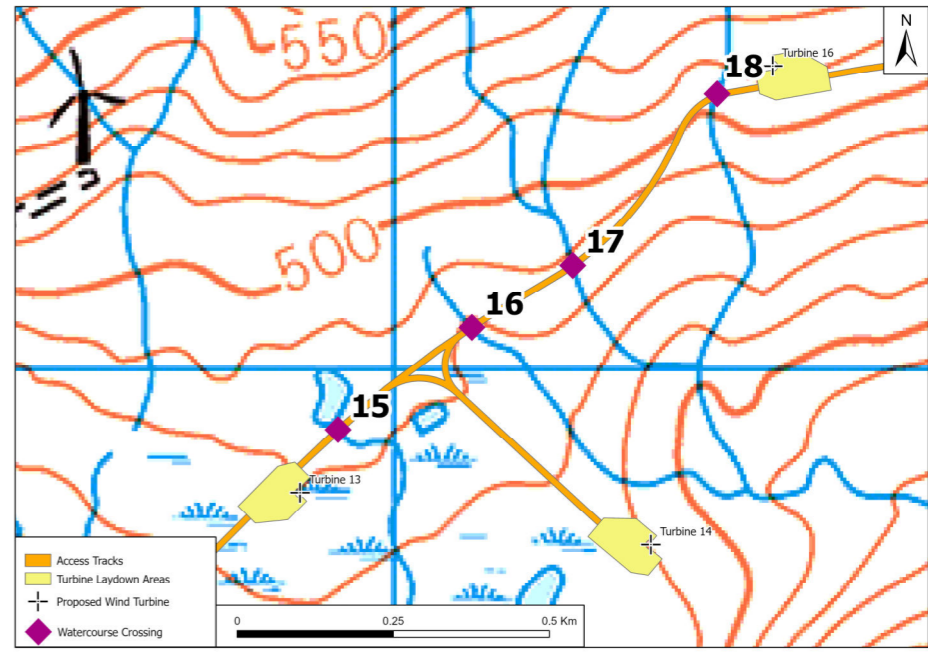
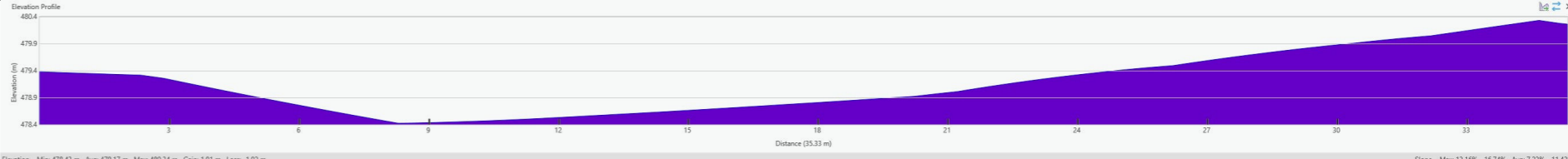


Watercourse Crossing 15	
Existing/New Crossing	New Crossing
Location Description	Approximately 117 m northeast of Turbine 13
Grid-coordinates	224,910E 805,901N
Description	Tributary of Allt Achaidh Luachraich flowing from north to south to Loch Garry
Crossing Type	Piped Culvert
CAR Requirement	Registration
Elevation Profile	 <p>Elevation Profile Elevation (m) 484.7 484.5 484.3 484.1 483.9 483.7 Distance (47.27 m) Slope: Max 6.80%, Avg 4.49%, Min -1.35%</p>



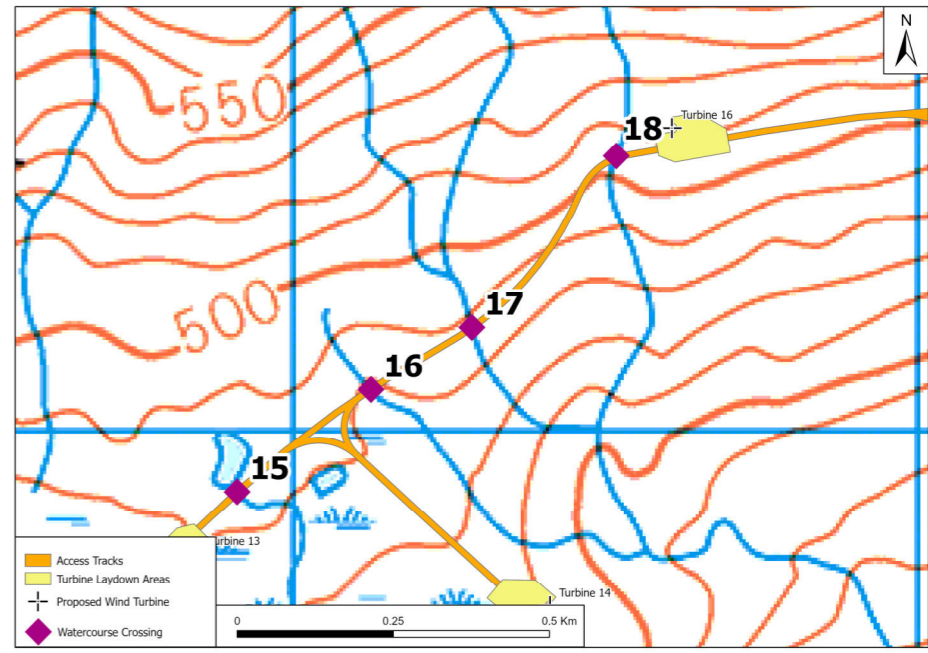
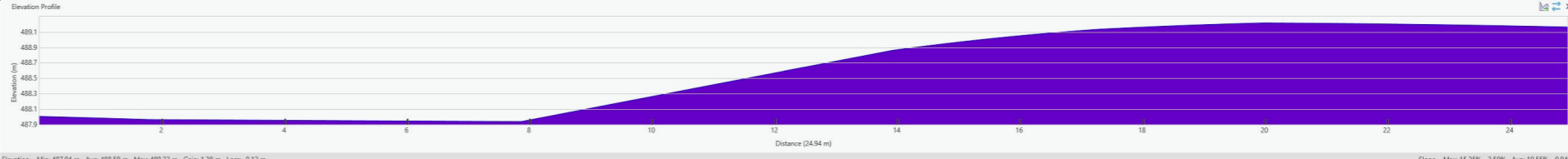
Watercourse Crossing Photos



Watercourse Crossing 16		
Existing/New Crossing	New Crossing	
Location Description	Approximately 380m northeast of Turbine 13	
Grid-coordinates	225,125E 806,065N	
Description	Tributary of Allt Achaidh Luachraich flowing from north to south to Loch Garry	
Crossing Type	Piped Culvert	
CAR Requirement	Registration	
Elevation Profile		

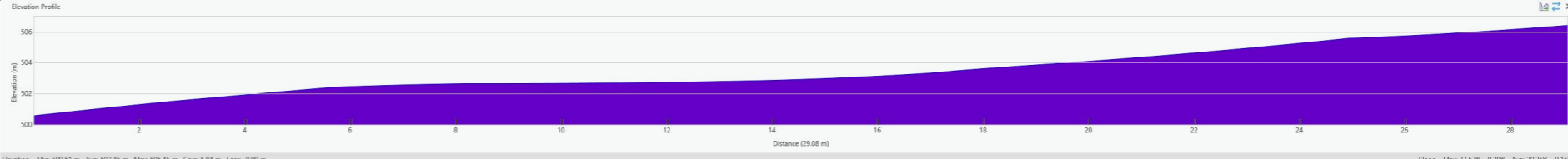
**Watercourse Crossing Photos**

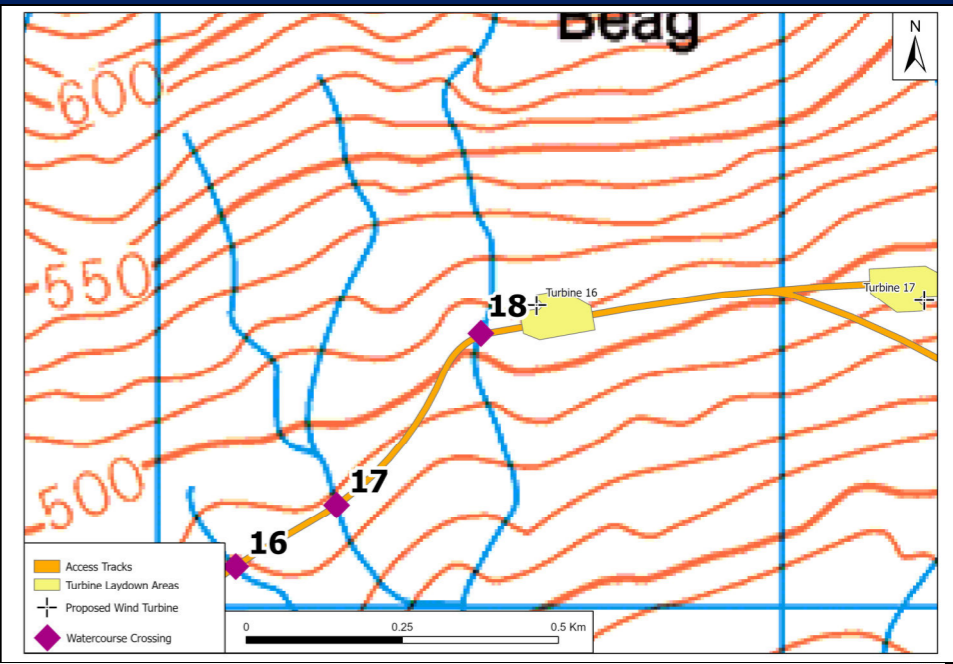


Watercourse Crossing 17		
Existing/New Crossing	New Crossing	
Location Description	Approximately 450 m southwest of Turbine 16	
Grid-coordinates	225,286E 806,164N	
Description	Tributary of Allt Achaidh Luachraich flowing from north to south to Loch Garry	
Crossing Type	Wide Arched Culvert	
CAR Requirement	Registration expected (Simple Licence may be required depending on detailed final design)	
Elevation Profile		

Watercourse Crossing Photos

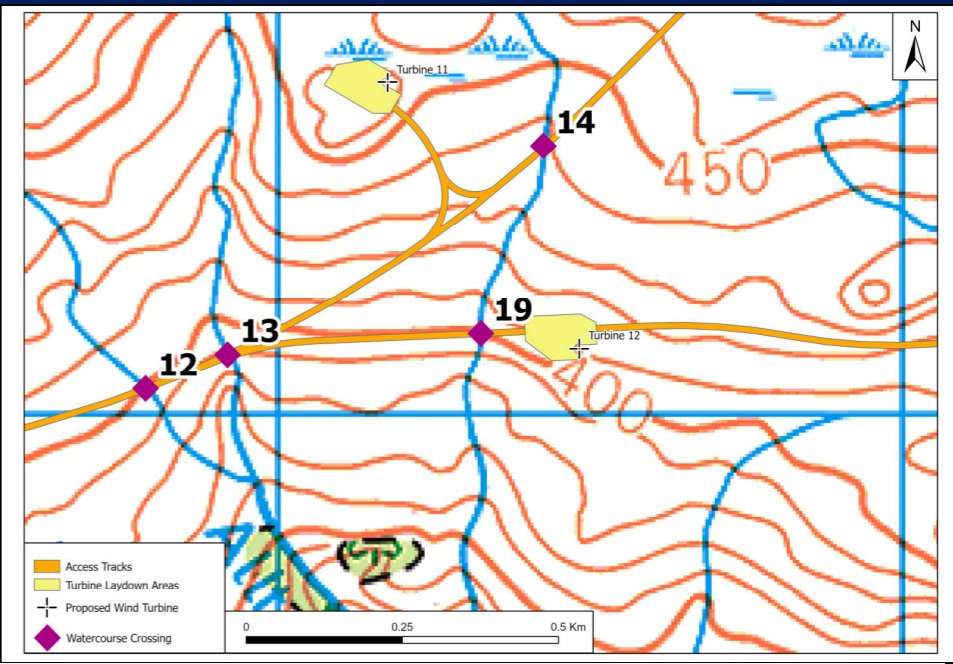
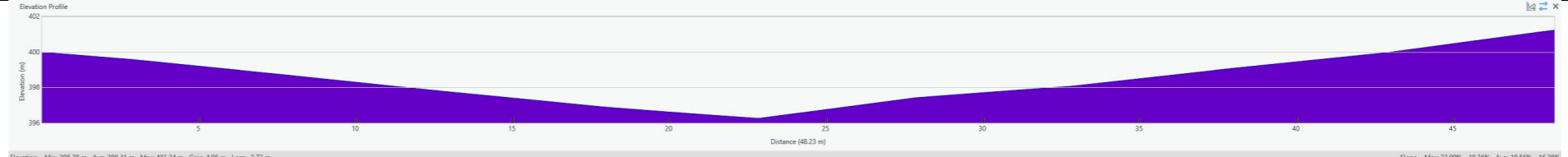


Watercourse Crossing 18	
Existing/New Crossing	New Crossing
Location Description	Approximately 100 m west of Turbine
Grid-coordinates	225,517E 806,439 m
Description	Tributary of Allt Achaidh Luachraich flowing from north to south to Loch Garry
Crossing Type	Arched Culvert
CAR Requirement	Registration
Elevation Profile	

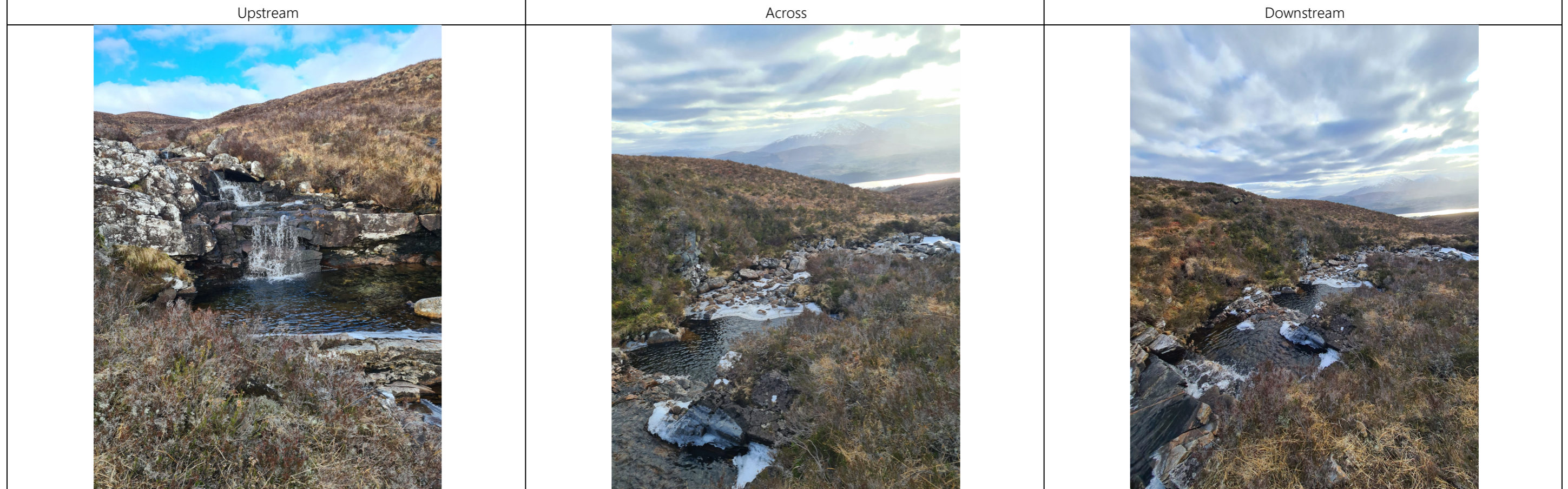


**Watercourse Crossing Photos**

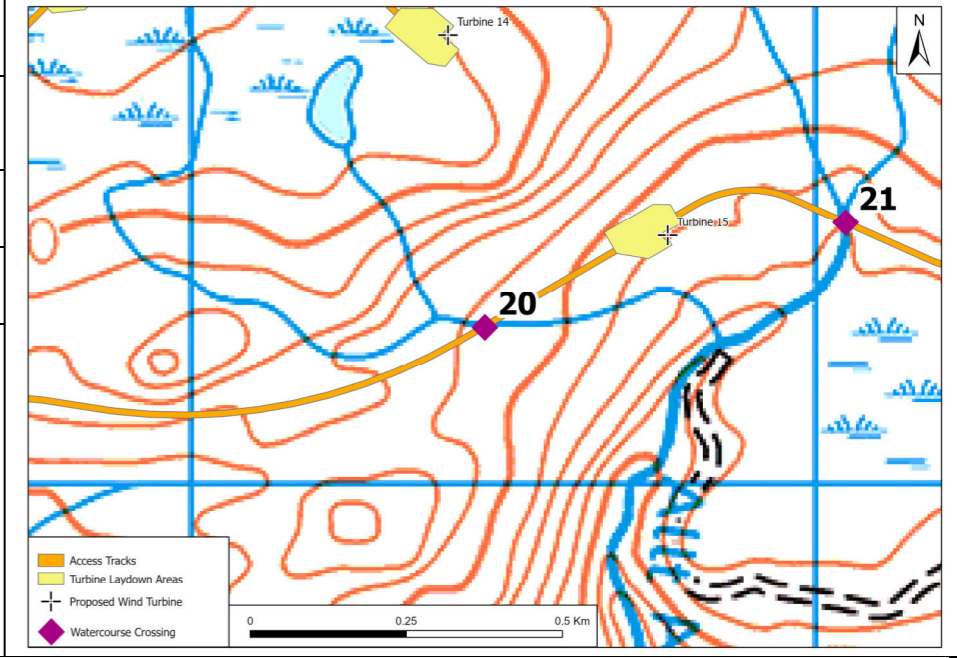


Watercourse Crossing 19		
Existing/New Crossing	New Crossing	
Location Description	Approximately 160 m west of Turbine 12	
Grid-coordinates	224,325E 805,128N	
Description	Unnamed river joining Allt Daingean flowing north to south to Loch Garry	
Crossing Type	Wide Arched Culvert	
CAR Requirement	Registration expected (Simple Licence may be required depending on detailed final design)	
Elevation Profile	 <p>Elevation Profile Elevation (m) 402 400 398 396 0 5 10 15 20 25 30 35 40 45 Distance (48.23 m) Elevation: Min: 396.28 m Avg: 398.41 m Max: 401.24 m Gain: 4.96 m Loss: -3.72 m Slope: Min: 23.90% -18.36% Avg: 19.56% -16.28%</p>	

Watercourse Crossing Photos



Watercourse Crossing 20	
Existing/New Crossing	New Crossing
Location Description	Approximately 330 m southwest
Grid-coordinates	225,470E 805,249N
Description	Tributary of Allt Achaidh Luachraich flowing from north to south to Loch Garry
Crossing Type	Arched Culvert
CAR Requirement	Registration
Elevation Profile	



Watercourse Crossing Photos

Upstream	Across	Downstream

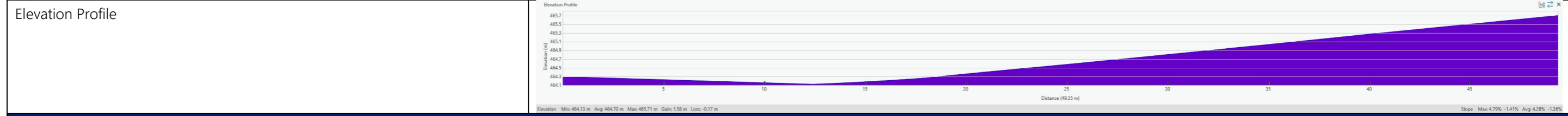
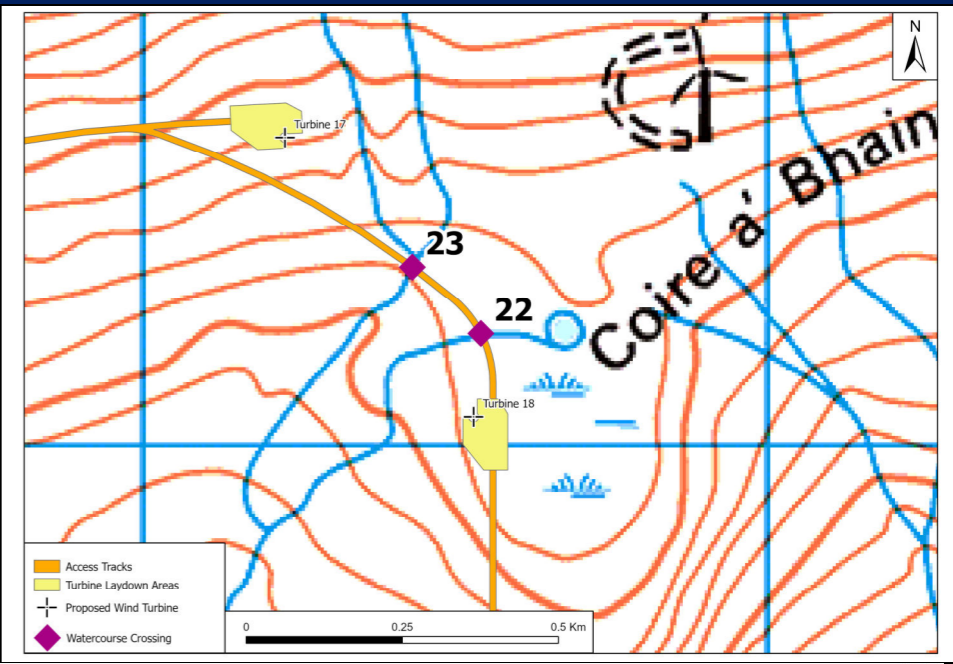
Watercourse Crossing 21		
Existing/New Crossing	New Crossing	
Location Description	Approximately 285 m east of Turbine 15	
Grid-coordinates	226,048E 805,417N	
Description	River Allt Achaidh Luachraich flowing from north to south to Loch Garry	
Crossing Type	Wide Arched Culvert	
CAR Requirement	Registration expected (Simple Licence may be required depending on detailed final design)	
Elevation Profile		

Watercourse Crossing Photos

Upstream	Across	Downstream

**Watercourse Crossing 22**

Existing/New Crossing	New Crossing
Location Description	Approximately 134 m north of Turbine 18
Grid-coordinates	226,541E 806,178N m
Description	Tributary of Achaidh Luachraich flowing from north to south to Loch Garry
Crossing Type	Arched Culvert
CAR Requirement	Registration



**Watercourse Crossing Photos**

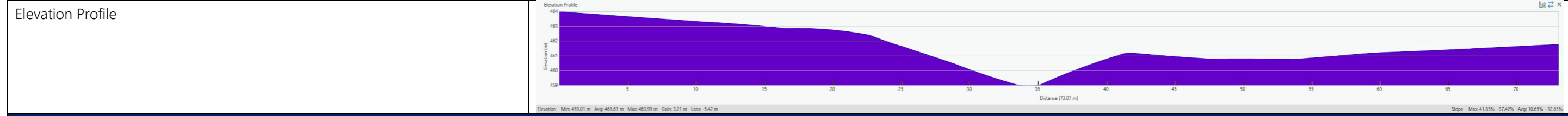
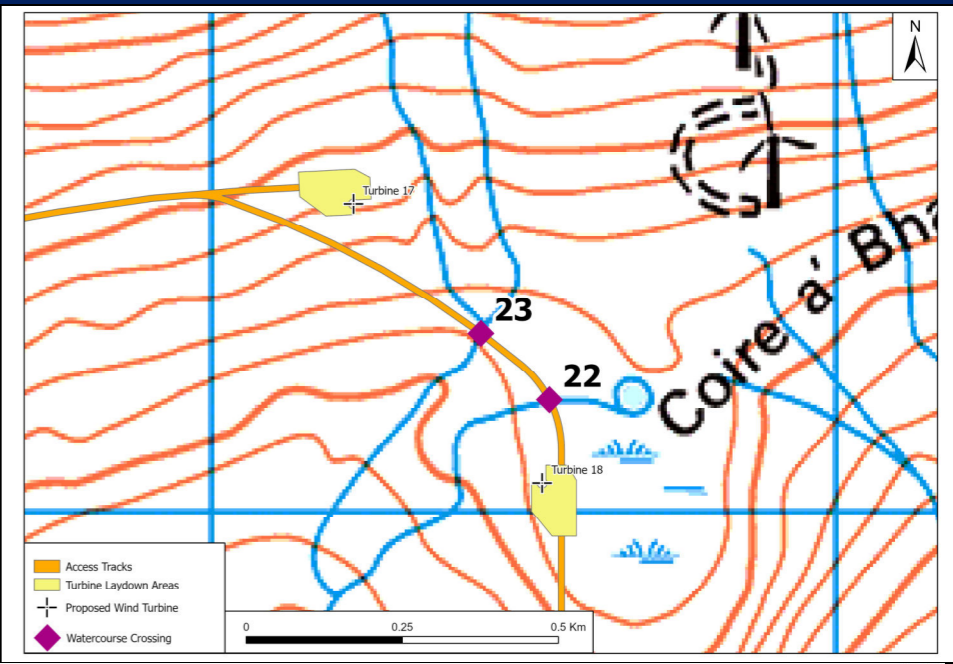
Track changes have occurred since the Site visit, therefore there are no Site photographs of this watercourse crossing.

**Aerial Image**



**Watercourse Crossing 23**

Existing/New Crossing	New Crossing
Location Description	Approximately 260 m north of Turbine 18
Grid-coordinates	226,431E 806,284N
Description	River Achaidh Luachraich flowing from north to south to Loch Garry
Crossing Type	Wide arched Culvert
CAR Requirement	Registration expected (Simple Licence may be required depending on detailed final design)



**Watercourse Crossing Photos**

Track changes have occurred since the Site visit, therefore there are no Site photographs of this watercourse crossing.

**Aerial Image**





RAINCLOUD



FLOOD RISK



SuDS



EIA

[www.raincloud-consulting.co.uk](http://www.raincloud-consulting.co.uk)

[hello@raincloud-consulting.co.uk](mailto:hello@raincloud-consulting.co.uk)